

## RhoA

**Catalog Number:** 21017

**Gene Symbol:** RHOA

**Description:** Anti-RhoA Rabbit Polyclonal Antibody

**Background:** Small GTPases are a super-family of cellular signaling regulators. RhoA belongs to the Rho sub-family of GTPases. Rho proteins play critical roles in many actin cytoskeleton-dependent processes including platelet aggregation, cell motility, contraction, and cytokinesis. It regulates the formation of stress fibers and focal adhesions in fibroblasts and Ca<sup>2+</sup> sensitivity of smooth muscle contraction.

**Immunogen:** A synthetic peptide from the C-terminal region of RhoA.

**Tested applications:** ELISA, WB, IHC, IP

**Recommended dilutions:**

ELISA 1:100-1:5000

WB 1:100-1:2000

IHC 1:10-1:100

**Concentration:** 0.2 mg/ml

**Host:** Rabbit

**Clonality:** Polyclonal

**Purity:** Purified from serum

**Format:** Liquid

**Storage buffer:**

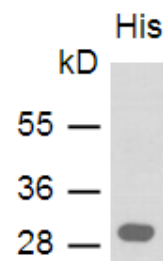
Preservative: no

Constituents: PBS (without Mg<sup>2+</sup> and Ca<sup>2+</sup>), pH 7.4, 150 mM NaCl, 50% glycerol

**Species Reactivity:** RhoA antibody recognizes RhoA from vertebrates.

**Storage Conditions:** Store at -20°C. Avoid freeze / thaw cycles

**Western blot:**



**WB:anti-RhoA pAb**

Western blot analysis of RhoA proteins. Purified recombinant His-RhoA protein was used for western blot with the anti-RhoA rabbit polyclonal antibody (Cat. # 21017).