

## SMAD4

**Catalog Number:** 26453

**Gene Symbol:** SMAD4, DPC4, JIP, MADH4, MYHRS

**Description:** Anti-SMAD4 Mouse Monoclonal Antibody

**Background:** SMAD4 family member 4, also known as SMAD4, is a protein that in human is encoded by the SMAD4 gene. It is often found mutated in many cancers. It acts as a tumor suppressor that functions in the regulation of the TGF- $\beta$  signal transduction pathway, which negatively regulates growth of epithelial cells and the extracellular matrix (ECM). SMAD4 alterations have been found in multiploid colorectal cancer and pancreatic carcinoma. It is found inactivated in at least 50% of pancreatic cancers. It is also found mutated in the autosomal dominant disease juvenile polyposis syndrome (JPS).

**Immunogen:** Purified SMAD4 protein, human origin.

**Tested applications:** ELISA, WB, IHC

**Recommended dilutions:**

ELISA: 1:1000-1:2000

WB: 1:500-1:1000

IHC: 1:50-1:100

**Concentration:** 1 mg/ml

**Host:** Mouse

**Clonality:** Monoclonal

**Purity:** Purified from ascites

**Format:** Liquid

**Storage buffer:**

Preservative: no

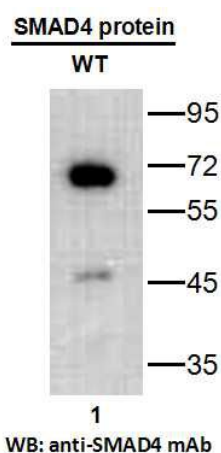
Constituents: PBS (without Mg<sup>2+</sup> and Ca<sup>2+</sup>), pH

7.4, 150 mM NaCl, 50% glycerol

**Species Reactivity:** Recognizes SMAD4 of vertebrates.

**Storage Conditions:** Store at -20°C. Avoid freeze / thaw cycles.

**Western blot:**



**Western blot analysis of recombinant SMAD4 protein.** Purified His-tagged SMAD4 protein (1-552aa, 65kd) was blotted with anti-SMAD4 monoclonal antibody (Cat. #26453).

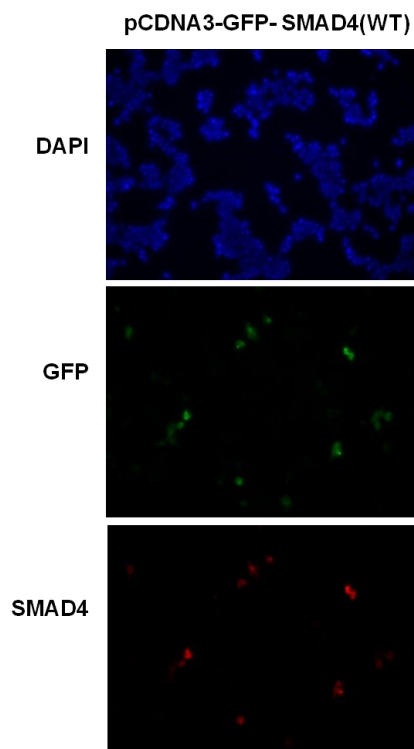
For research use only. Not for diagnostic or therapeutic applications.

24 Whitewoods Lane, Malvern, PA 19355 Tel: (610) 945-2007 FAX: (610) 945-2008

E-mail: [sale@neweastbio.com](mailto:sale@neweastbio.com)

Web: [www.neweastbio.com](http://www.neweastbio.com)

## Immunofluorescence:



### Immunofluorescence of cells expressing SMAD4 proteins with anti-SMAD4 antibody.

HEK293T cells were transfected with pCDNA3-GFP-SMAD4 (WT) plasmid, then fixed and stained with anti-SMAD4 monoclonal antibody (Cat. #26453).

---

For research use only. Not for diagnostic or therapeutic applications.

24 Whitewoods Lane, Malvern, PA 19355 Tel: (610) 945-2007 FAX: (610) 945-2008  
E-mail: [sale@neweastbio.com](mailto:sale@neweastbio.com) Web: [www.neweastbio.com](http://www.neweastbio.com)