



# Product Description

— A helping hand for your research

---

## **BRAF (V600M)**

**Catalog Number:** 26462

**Gene Symbol:** BRAF, BRAF1, RAFB1

**Description:** Anti-BRAF (V600M) Mouse Monoclonal Antibody

---

**Background:** BRAF belongs to a family of serine-threonine protein kinases. As a part of a signaling pathway known as the the RAS/MAPK pathway, it plays an important part in many cellular processes. The processes include cell proliferation, differentiation and transcriptional regulation. Mutations in the BRAF gene cause diseases. Inherited mutations in BRAF cause cardiofaciocutaneous syndrome. Acquired mutations in BRAF have been found in cancers.

**Immunogen:** A synthetic peptide from the internal region of BRAF which includes the mutation of V600M, human origin.

**Tested applications:** ELISA, IF, IHC

**Recommended dilutions:**

ELISA: 1:1000-1:5000

IF: 1:50-1:100

IHC: 1:50-1:100

**Concentration:** 1 mg/ml

**Host:** Mouse

**Clonality:** Monoclonal

**Purity:** Purified from ascites

**Format:** Liquid

**Storage buffer:**

Preservative: no

Constituents: PBS (without Mg<sup>2+</sup> and Ca<sup>2+</sup>), pH 7.4, 150 mM NaCl, 50% glycerol

**Species Reactivity:** Recognizes V600M mutant, but not wild-type BRAF of vertebrates.

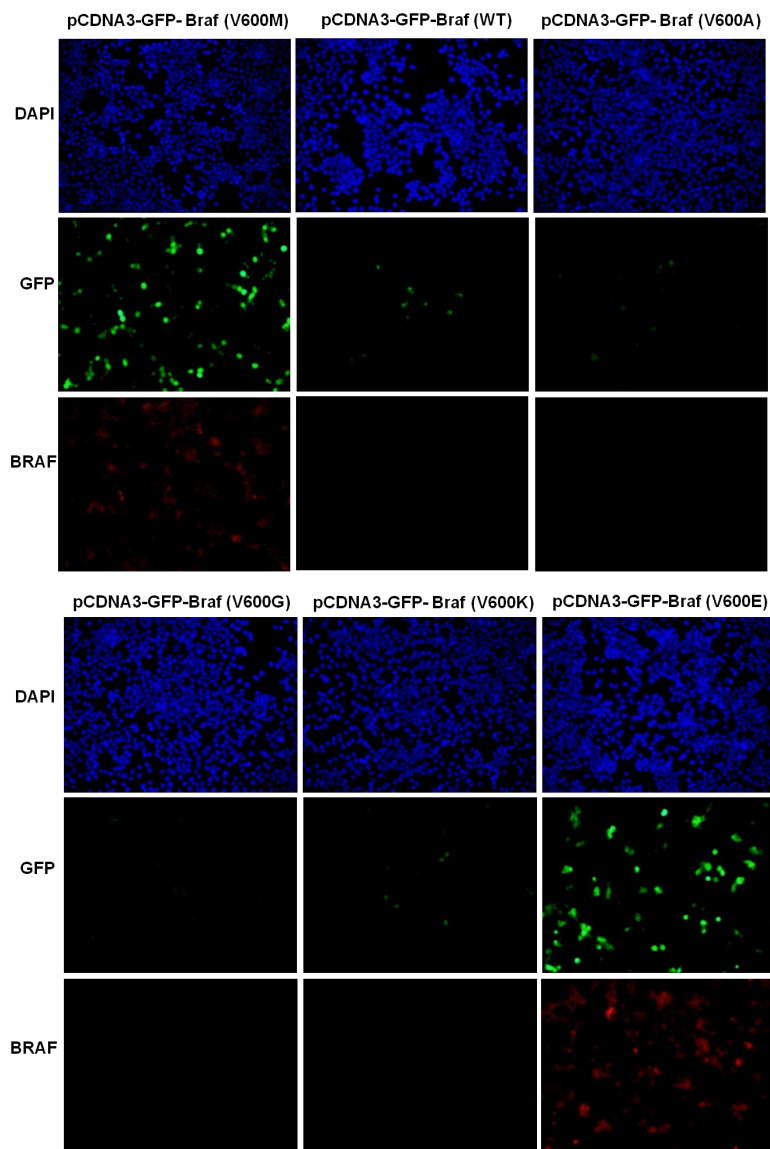
**Storage Conditions:** Store at -20°C. Avoid freeze / thaw cycles.

---

**For research use only. Not for diagnostic or therapeutic applications.**

24 Whitewoods Lane, Malvern, PA 19355 Tel: (610) 945-2007 FAX: (610) 945-2008  
E-mail: [sale@neweastbio.com](mailto:sale@neweastbio.com) Web: [www.neweastbio.com](http://www.neweastbio.com)

## Immunofluorescence:



### Immunofluorescence of cells expressing BRAF proteins with anti-BRAF (V600M) antibody.

HEK293T cells were transfected with pCDNA3-GFP-BRAF (V600M) plasmid, pCDNA3-GFP-BRAF (WT) plasmid, pCDNA3-GFP-BRAF (V600A) plasmid, pCDNA3-GFP-BRAF (V600G) plasmid, pCDNA3-GFP-BRAF (V600K) plasmid or pCDNA3-GFP-BRAF (V600E) plasmid, then fixed and stained with anti-BRAF (V600M) monoclonal antibody (Cat. #26462).

For research use only. Not for diagnostic or therapeutic applications.

24 Whitewoods Lane, Malvern, PA 19355 Tel: (610) 945-2007 FAX: (610) 945-2008  
E-mail: [sale@neweastbio.com](mailto:sale@neweastbio.com) Web: [www.neweastbio.com](http://www.neweastbio.com)